

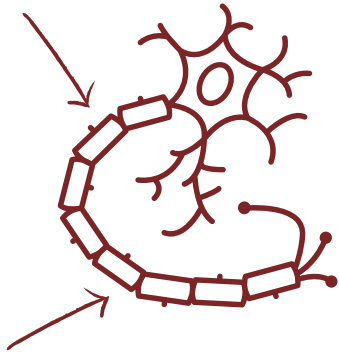


**The Nervous System**  
**from A to Z**



**by: Eric H. Chudler**

**© 2021**



A

is for  
AXON.



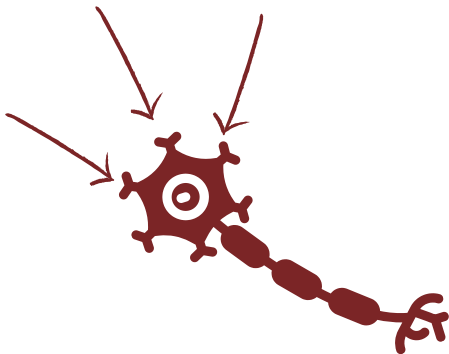
B

is for  
BRAIN.



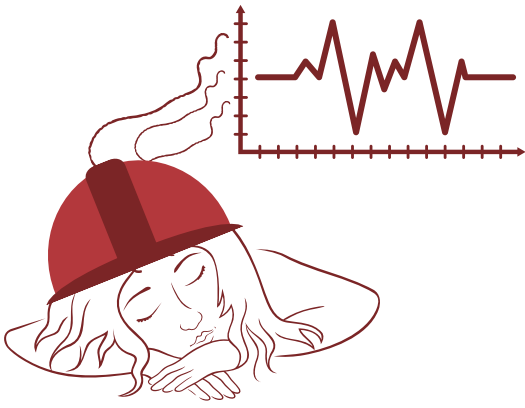
C

is for  
CORTEX.



D

is for  
DENDRITE.



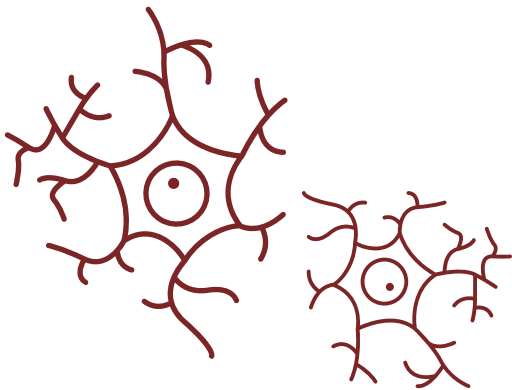
E

is for  
EEG.



F

is for  
FRONTAL  
LOBE.



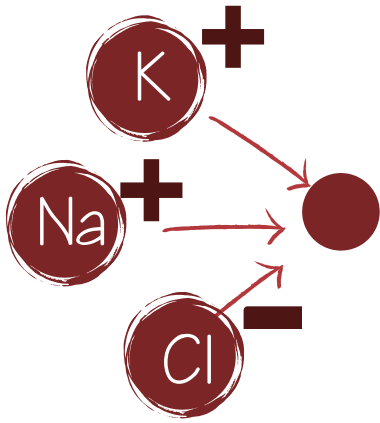
G

is for  
GLIA.



H

is for  
HEMISPHERE



I

is for  
ION.



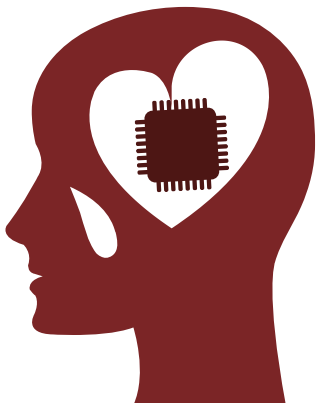
J

is for  
JETLAG.



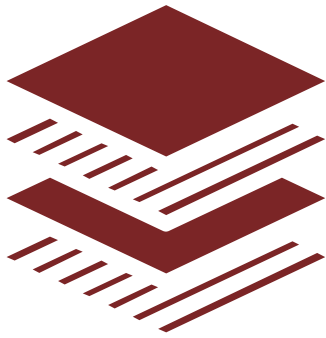
K

is for  
KNEE JERK  
REFLEX.



L

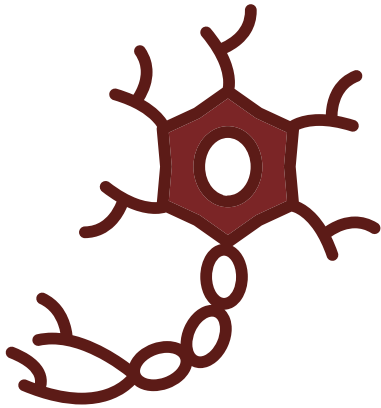
is for  
LIMBIC  
SYSTEM.



DURA  
ARACHNOID  
PIA  
BRAIN

M

is for  
MENINGES.



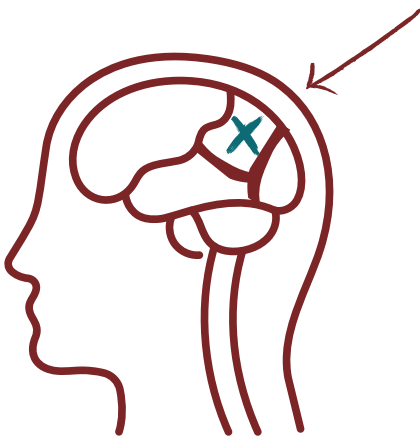
N

is for  
NEURON.



O

is for  
OCCIPITAL  
LOBE.



P

is for  
PARIETAL  
LOBE.



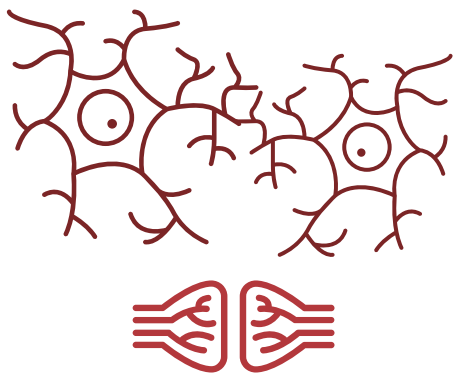
Q

is for  
QUADRIPLEGIA.



R

is for  
RECEPTOR.



S

is for  
SYNAPSE.



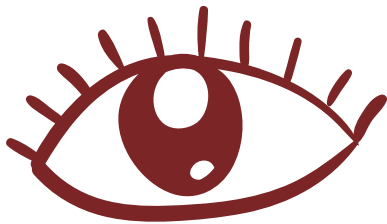
T

is for  
TEMPORAL  
LOBE



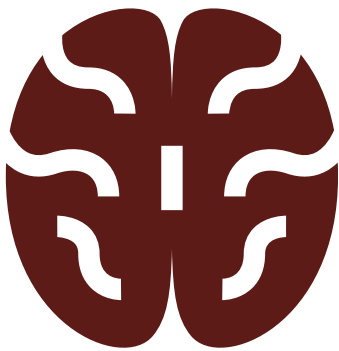
U

is for  
UNIPOLAR.



V

is for  
VISION.



W

is for  
WHITE  
MATTER.



X

is for  
X-RAYS.



Y

is for  
YAWN.



Z

is for  
ZINC.



# INDEX

**AXON** - PART OF A NEURON THAT TAKES INFORMATION AWAY FROM THE CELL BODY.

**BRAIN** - ORGAN COMPOSED OF BILLIONS OF NEURONS AND GLIAL CELLS THAT COORDINATE ALL BEHAVIOR.

**CORTEX** - THE OUTERMOST LAYER OF THE CEREBRAL HEMISPHERE.

**DENDRITE** - PART OF A NEURON THAT TAKES INFORMATION TO THE CELL BODY.

**EEG** - THE ELECTROENCEPHALOGRAM; A RECORD OF THE ELECTRICAL ACTIVITY OF THE BRAIN OBTAINED FROM SCALP ELECTRODES.

**FRONTAL LOBE** - AREA OF THE CEREBRAL CORTEX INVOLVED WITH REASONING, PLANNING, SPEECH, MOVEMENT, AND EMOTIONS.

**GLIA** - SUPPORT CELLS OF THE NERVOUS SYSTEM.

**HEMISPHERE** - ONE-HALF OF THE BRAIN.

**ION** - CHARGED MOLECULE.

**JET LAG** - SYMPTOMS THAT OCCUR AFTER TRAVELING THROUGH MANY TIME ZONES.

**KNEE JERK REFLEX** - KICKING RESPONSE SEEN AFTER A TAP JUST BELOW THE KNEE.

**LIMBIC SYSTEM** - INTERCONNECTED AREAS OF THE BRAIN IMPORTANT FOR EMOTIONS.

**MENINGES** - SERIES OF THREE MEMBRANES (DURA MATER, ARACHNOID, PIA MATER) THAT COVER THE BRAIN AND SPINAL CORD.

**NEURON** - A NERVE CELL.

**OCCIPITAL LOBE** - AREA OF THE CEREBRAL CORTEX IMPORTANT FOR VISION.

**PARIETAL LOBE** - AREA OF THE CEREBRAL CORTEX INVOLVED WITH THE PERCEPTION OF TOUCH, PRESSURE, TEMPERATURE, AND PAIN.

**QUADRIPLEGIA** - PARALYSIS OF ALL FOUR LIMBS.

**RECEPTOR** - MEMBRANE PROTEIN THAT CAN BIND NEUROTRANSMITTERS; USED IN CHEMICAL COMMUNICATION BETWEEN NEURONS.

**SYNAPSE** - FUNCTIONAL CONNECTION BETWEEN ONE NEURON AND ANOTHER NEURON.

**TEMPORAL LOBE** - AREA OF THE CEREBRAL CORTEX INVOLVED WITH MEMORY AND THE PERCEPTION AND RECOGNITION OF SOUNDS.

**UNIPOLAR** - A NEURON WITH A SINGLE BRANCH EXTENDING FROM THE CELL BODY.

**VISION** - THE SENSE OF SIGHT.

**WHITE MATTER** - NERVE FIBER PATHWAYS.

**X-RAYS** - SHORT WAVELENGTH RADIATION USED TO IMAGE THE BODY.

**YAWN** - AN INVOLUNTARY INSPIRATION OF AIR WITH THE MOUTH WIDE OPEN.

**ZINC** - A CHEMICAL ELEMENT FOUND IN TRACE CONCENTRATIONS WITHIN THE BRAIN.

# Neuroscience for Kids

[HTTP://FACULTY.WASHINGTON.EDU/CHUDLER/NEUROK.HTML](http://faculty.washington.edu/chudler/neurok.html)